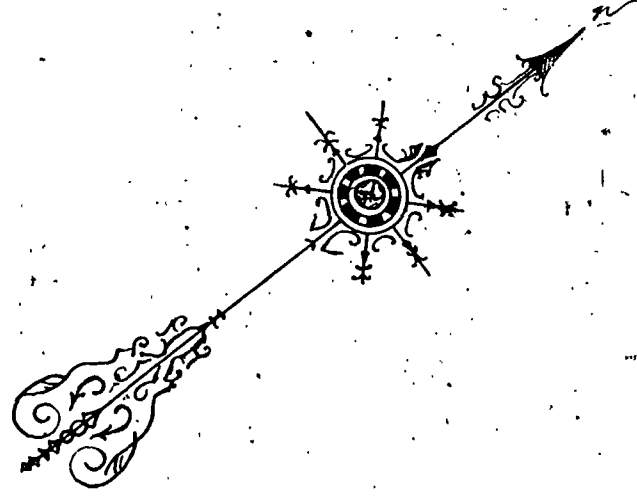


MAP
OF
THE TOWN
OF
WILDOMAR

WILDOMAR
SITUATED IN
ELSINORE
SAN DIEGO CO. CAL.

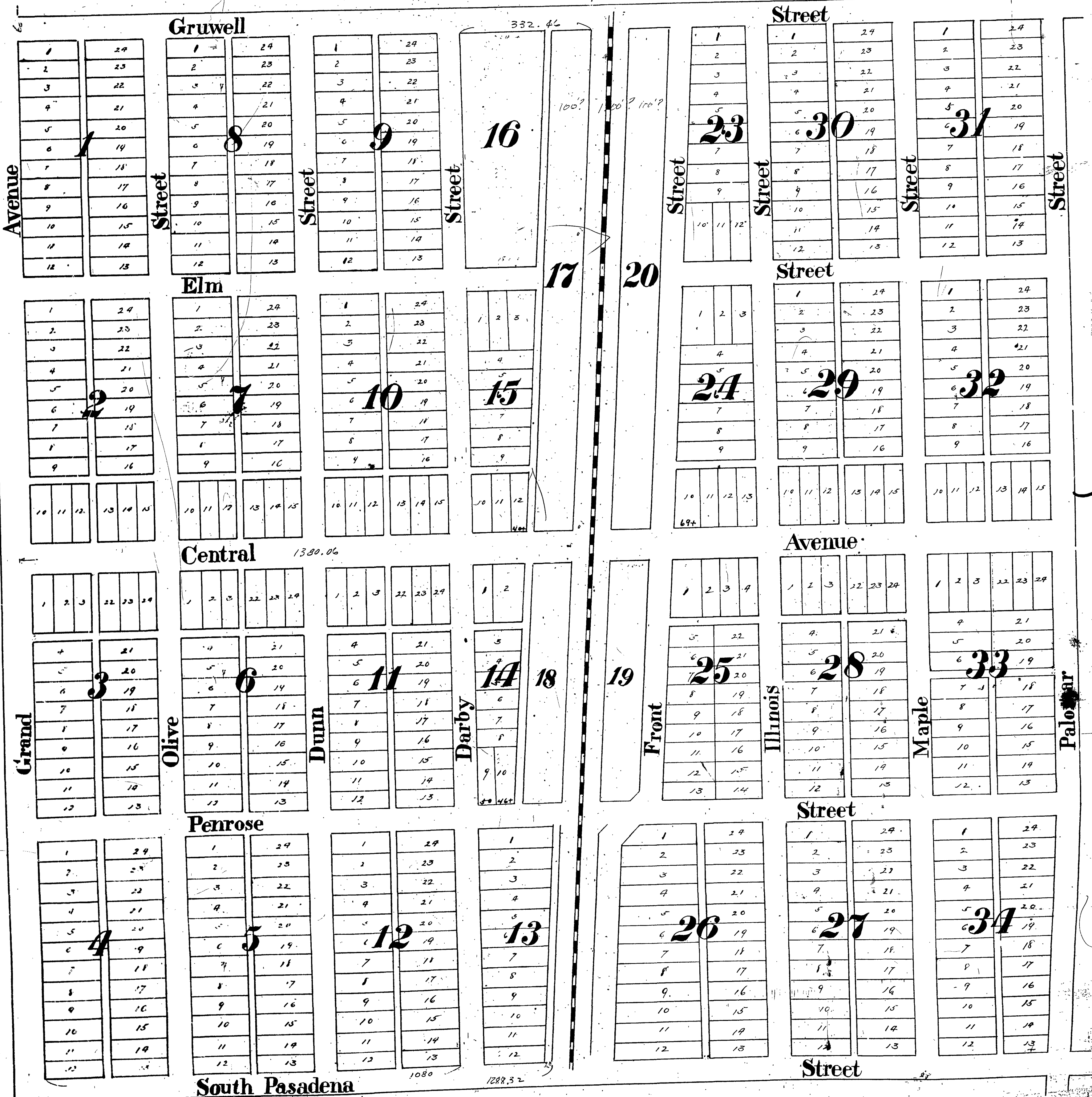
Scale: 150 ft. to one inch.



Filed Nov 20th 1886 at
request of William Collins
J. McDowell
County Recorder
By R. B. Reed
Deputy

State of California } We have subdivided
San Diego County } Lots 29, 31, 33, and 35 Block
No. 16 and Lots 28, 29, 30 & 31
Block 16 of Elsinore according to the accompanying
map and subdivision made by R. B. Westphall & Co.
in December 1885 forming the Town of Wildomar.
Avenues are eighty, streets sixty, and alleys
twenty feet wide: and are hereby dedicated to
public use as such; except that the public shall
not acquire no right to lay, or control laying of
water mains and pipes or railway tracks of any
kind in, or under said avenues, streets and alleys:
but such rights, together with the ownership of the
fee of said avenues, streets and alleys are in this
dedication forever reserved to the undersigned.
Witness our hands and seals this 5th day of
November A. D. 1886

Donald Mc Graham (Seal)
William Collins (Seal)



MB6/294

S.D. CO.

CR 87-84 LOTS 829 BAK 24