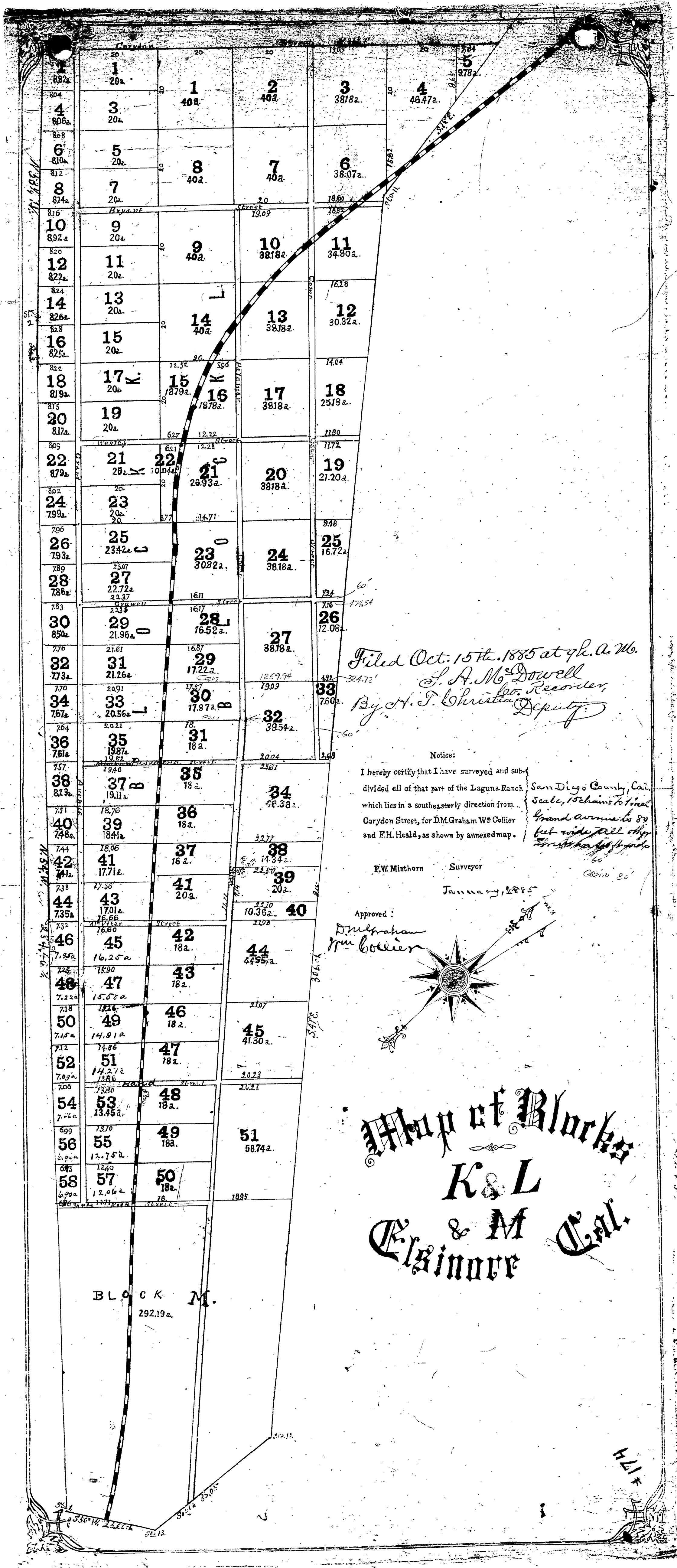


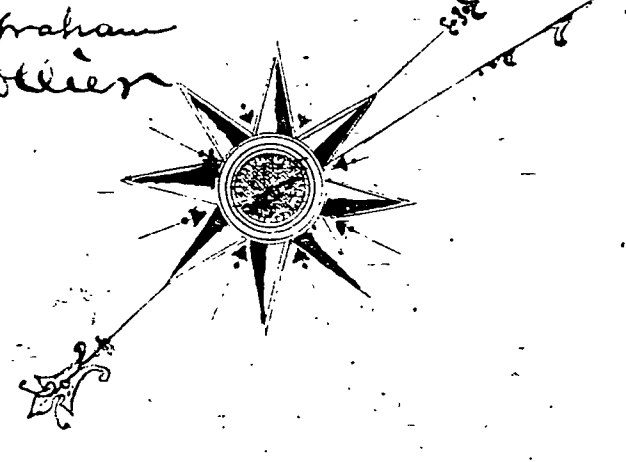
MB4/174 S.D.CO.



Filed Oct. 15th. 1885 at 9h. a. M.
 L. A. McDowell
 Co. Recorder,
 By A. J. Christian Deputy

Notice:
 I hereby certify that I have surveyed and subdivided all of that part of the Laguna Ranch which lies in a southeasterly direction from Carydon Street, for D.M. Graham W^o Collier and F.H. Heald, as shown by annexed map.
 San Diego County, Cal.
 Scale, 15 chains to 1 inch
 Grand Avenue is 80 feet wide, all other streets as shown on map.
 P.W. Minthorn Surveyor
 January, 1885

Approved:
 D.M. Graham
 W^o Collier



Map of Blocks
 K & L
 & M
 Cal.

Block M.
 292.19 a.

171